

Portable HDD Duplicator

User Manual



SH-PHD
shintaro.com.au

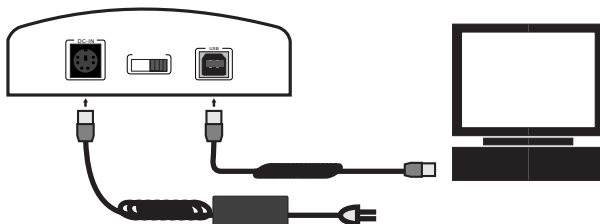
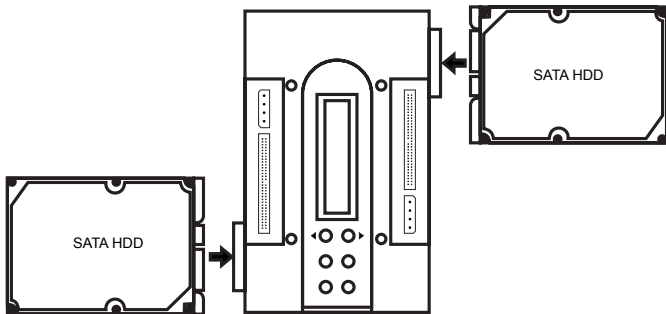


Portable HDD Duplicator

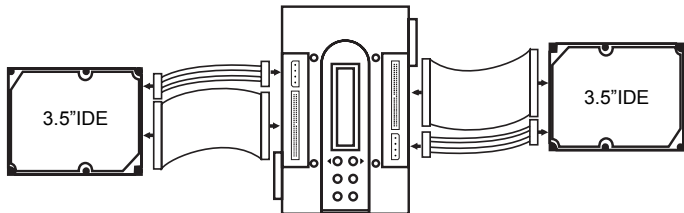
Contents

2.5"/3.5" SATA HDD Connection Diagram.....	4
Features /Operating System.....	6
Package Contents / Button Functions.....	6
System Mode.....	7
Duplicator Operation.....	8
RAID1 HDD Rebuild.....	12
FCC and CE Compliance Statement.....	14

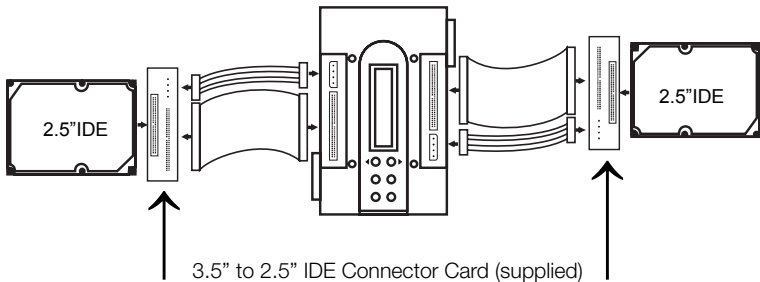
2.5"/3.5" SATA HDD Connection Diagram



(a) 3.5" IDE Connection Diagram



(b) 2.5" IDE Connection Diagram



Features

IDE/SATA HDD portable copy-station suitable for all 2.5" & 3.5" HDD

USB 2.0 Raid bridge external station suitable for all 2.5" & 3.5" HDD

Duplicator mode: Copy / Compare / Pre-scan / Erase

Easy handling over display Raid mode: Raid0 / Raid1 / Normal / JBOD

Stand alone usage without PC (Duplicator mode)

Operating System

Windows 98SE / 2000 / XP / Vista

Mac

Linux

Package Contents

1 x Copy station

1 x USB cable

1 x Power supply

1 x AC cable

2 x IDE cable

2 x ATX-4pin power cable

2 x 3.5" to 2.5" IDE converter

Protection cap for connectors

1 x User manual

The Button Function

▲	Up	ESC	Cancel
▼	Down	RESET	Reset station
ENT	Enter	MUTE	Mute the alarm sound

System Mode

1. Duplicator Mode

Copy HDD: Clone the boot sectors from the source HDD to the object HDD

Compare HDD: Compare the sectors of the source HDD to the object HDD

Pre-scan: Pre-scan the bad sectors of the source HDD

Erase: Erase all the data of the object HDD

Re-scan BUS: Re-scan all HDD which are connected to the station

Source Size: Show the capacity of the source HDD

Setup: Show the system information

Note: To stop the copy / compare / pre-scan mid-process, hold the “ESC” button down for 3 seconds

2. USB 2.0 Raid Bridge Mode

Connect the station to your HDD (bay 2) The raid mode options are:

RAID0 (Striping mode)

Maximum speed through two simultaneous working HDD

RAID1 (Mirroring mode)

Maximum security by HDD mirroring

JBOD (Spanning mode)

Two HDD combined to one single HDD (no raid)

Normal

Two independent HDD

Duplicator operation

Use the “▲” and “▼” buttons to select the Menu, and press the “ENT” button to enter the next step



For example, if “Copy HDD” was selected, more detailed information would be displayed

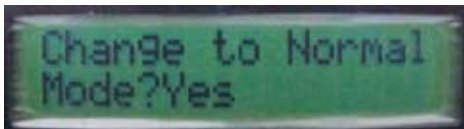


Raid operating

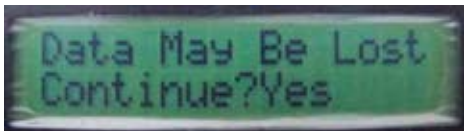
Use the “▲” and “▼” buttons to change the RAID mode



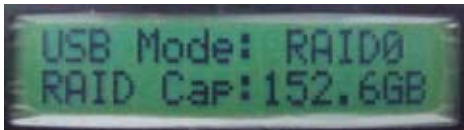
Press "ENT" to make a selection



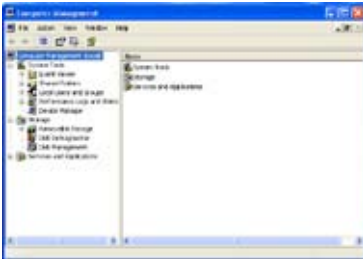
Press "ENT" to change the mode



Show the RAID information



Right click the “My Computer” icon, bringing up the pop-up menu. Chose the “Manage” option. Then select the “Computer Management” option. This allows you to operate the hard disk in your computer



The hard disk information is as follows:
Normal mode



JBOD mode

The screenshot shows the Windows Computer Management console. The left pane is expanded to 'Storage' > 'Disk Management'. The main pane displays a list of disks and a detailed view of a RAID 0 configuration. The RAID 0 configuration is shown as a single logical drive with a capacity of 14.53 GB. The underlying physical disks are listed as follows:

Volume	Layout	Type	File System	Status	Capacity	Free
CD-ROM (D:)	Partition	Basic	NTFS	Healthy	14.53 GB	7.26 GB
CD-ROM (E:)	Partition	Basic	NTFS	Healthy	14.53 GB	7.26 GB
CD-ROM (F:)	Partition	Basic	NTFS	Healthy	14.53 GB	7.26 GB
CD-ROM (G:)	Partition	Basic	NTFS	Healthy	14.53 GB	7.26 GB

The RAID 0 configuration details are as follows:

RAID 0	Capacity	Free
14.53 GB	7.26 GB	7.26 GB

The RAID 0 configuration is shown as a single logical drive with a capacity of 14.53 GB. The underlying physical disks are listed as follows:

Volume	Layout	Type	File System	Status	Capacity	Free
CD-ROM (D:)	Partition	Basic	NTFS	Healthy	14.53 GB	7.26 GB
CD-ROM (E:)	Partition	Basic	NTFS	Healthy	14.53 GB	7.26 GB
CD-ROM (F:)	Partition	Basic	NTFS	Healthy	14.53 GB	7.26 GB
CD-ROM (G:)	Partition	Basic	NTFS	Healthy	14.53 GB	7.26 GB

RAID0 mode

The screenshot shows the Windows Computer Management console. The left pane is expanded to 'Storage' > 'Disk Management'. The main pane displays a list of disks and a detailed view of a RAID 0 configuration. The RAID 0 configuration is shown as a single logical drive with a capacity of 14.53 GB. The underlying physical disks are listed as follows:

Volume	Layout	Type	File System	Status	Capacity	Free
CD-ROM (D:)	Partition	Basic	NTFS	Healthy	14.53 GB	7.26 GB
CD-ROM (E:)	Partition	Basic	NTFS	Healthy	14.53 GB	7.26 GB
CD-ROM (F:)	Partition	Basic	NTFS	Healthy	14.53 GB	7.26 GB
CD-ROM (G:)	Partition	Basic	NTFS	Healthy	14.53 GB	7.26 GB

The RAID 0 configuration details are as follows:

RAID 0	Capacity	Free
14.53 GB	7.26 GB	7.26 GB

The RAID 0 configuration is shown as a single logical drive with a capacity of 14.53 GB. The underlying physical disks are listed as follows:

Volume	Layout	Type	File System	Status	Capacity	Free
CD-ROM (D:)	Partition	Basic	NTFS	Healthy	14.53 GB	7.26 GB
CD-ROM (E:)	Partition	Basic	NTFS	Healthy	14.53 GB	7.26 GB
CD-ROM (F:)	Partition	Basic	NTFS	Healthy	14.53 GB	7.26 GB
CD-ROM (G:)	Partition	Basic	NTFS	Healthy	14.53 GB	7.26 GB

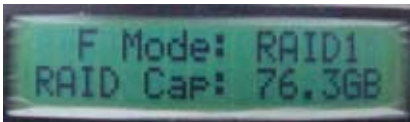
RAID1 mode



RAID1 HDD Rebuild

When the system is in RAID1 mode, if one HDD has broken, the system will automatically rebuild.

If the RAID1 system has broken, the display will show "F mode" and a buzzer will alarm once per second



Use the “▲” and “▼” buttons to select the “Information” → “Drive1” or “Drive2”

Note: Drive1 one is the “source HDD”, Drive2 is the “Object HDD”



If the HDD is broken, the display will show “Drive not exist.” Now you may replace the broken HDD



Insert a new HDD and restart the system, it will prompt you to rebuild the RAID1 system



The display will show the rebuild speed, spare volume and spare time



Erase HDD

Press "ESC" for a few seconds until you hear a "beep." Then select the third option, that will ERASE your hard drive. Please note the HDD to be erased must be connected as the target HDD

FCC

The equipment has been tested and found to comply with the limits for a Class B Digital Device, pursuant to part 15 of the FCC Rules.

CE

This equipment has been tested and found to comply with the limits of the European Council Directive on the approximation of the law of the member states relating to electromagnetic compatibility (89/336/EEC) according to EN 55022 Class B.

FCC and CE Compliance Statement

These limits are designed to provide reasonable protection against harmful interference in a residential installation. This equipment generates, uses

and can radiate radio frequency energy and, if not installed and used in accordance with the instruction, may cause harmful interference to radio communication. However, there is no grantee that interference will not occur in a particular installation. If this equipment dose cause harmful interference to radio or television reception, which can be determined by turning the equipment off and on, the user is encouraged to try to correct the interference by one or more of the following measures:

- Reorient or relocate the receiving antenna
- Increase the separation between the equipment and receiver
- Connect the equipment into an outlet on a circuit different from that to which the receiver is connected
- Consult the dealer or an experienced radio/TV technician for help

Caution:

The Federal Communications Commission warns the user that changes or modifications to the unit not expressly approved by the party responsible for compliance could void the user’s authority to operate the equipment.



support@shintaro.com.au